

Complying With Changing Regulations

2018 EJIF Seminar Series



2018 EJIF WORKSHOP

Matt Mee, Project Scientist
Kristi Sorrentino, Project Scientist

COMPLYING
WITH
CHANGING
REGULATIONS



1. EJIF CLAIMS 2018
LESSONS LEARNED

2. MUNICIPAL STORMWATER PERMITS
NEW REQUIREMENTS FOR ALL TOWNS

3. NEW UST RULES

4. EJIF TRIVIA!

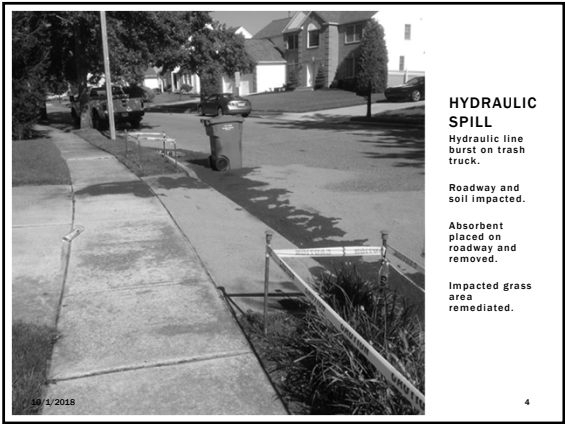
5. QUESTIONS & ANSWERS

Today's
Topics

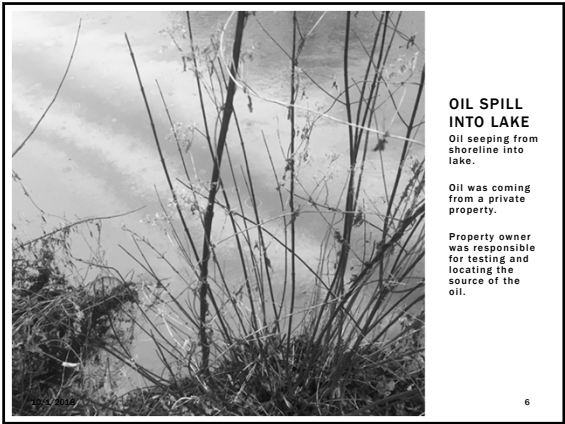
2


EJIF CLAIMS 2018
LESSONS LEARNED

3









HYDRAULIC SPILL
Hydraulic line burst on street sweeper.


Impacted road had absorbent placed on it.

Absorbent later removed.

No water or soil impacted.

10/1/2018

7



WASTE OIL AST OVERFILL
Used oil tank overflow due to malfunction of automatic shutoff.

Most of the oil was contained in the garage.

Some oil flowed under the door but stayed on pavement.

10/1/2018

8

TIER A STORMWATER PERMIT

9

TIER A STORMWATER PERMIT

Effective Date: January 1, 2018

■ Important Compliance Dates:

April 1, 2018: Develop a Stormwater Website, Post Plans & Ordinances

May 1, 2018: Submit Annual Certification Report

July 1, 2018: Training for Municipal Board & Governing Body Members

January 1, 2019: Submit Outfall Pipe Map to NJDEP

Advertise Education and Outreach Activities

Implement BMPs:

- Aggregate & Construction Debris Storage
- Street Sweepings & Catch Basin Cleanout Material
- Roadside Vegetation Management

Complete training for development/redevelopment project reviewer

Maintain copies of maintenance plans for stormwater facilities

Annually review and identify TMDL within or bordering municipality

December 21, 2020: Submit Outfall Pipe Map to NJDEP

10

TOTAL MAXIMUM DAILY LOAD
(TMDL) INFORMATION

11

TOTAL MAXIMUM DAILY LOAD (TMDL) INFORMATION
MINIMUM STANDARD

NEW REQUIREMENT:
DEVELOP STRATEGIES TO ADDRESS LOCAL TMDLs AS OPTIONAL
MEASURES IN STORMWATER POLLUTION PREVENTION PLAN


WWW.NJ.GOV/DEP/DWQ/MSRP-TMDL-RH.HTM

- Tool developed to allow stormwater coordinator's to quickly identify TMDL information.
- Refer to Implementation section of each TMDL report as a starting point for developing strategies to address identified pollutants at local level.
- Goal is to use this information to prioritize stormwater facility maintenance and to assist in development of mitigation plans.

12


STEP 1

WWW.NJ.GOV/DEP/DWQ/MSRP-TMDL-RH.HTM




STEP 2

IDENTIFY APPLICABLE TMDL INFO



STEP 2

IDENTIFY APPLICABLE TMDL INFO



Review
Implementation
Section of
Document for
Mitigation
Strategies to
incorporate into
SPPP

EXAMPLE TMDL REPORT

Amendment to the
Monmouth County Water Quality Management Plan

Total Maximum Daily Loads for
Fecal Coliform to Address 2 Streams in the
Atlantic Coastal Water Region

Watershed Management Area 12
(Hannabrand and Trout Brooks)

Proposed: May 2, 2005
Established: August 18, 2005
Approved: September 15, 2005
Adopted:

New Jersey Department of Environmental Protection
Division of Watershed Management
P.O. Box 418
Trenton, New Jersey 08625-0418

16

IMPLEMENTATION:
MANAGEMENT MEASURES

Management strategies are summarized below:

Source Category	Responses	Potential Responsible Entity	Funding options
Human Sources	Inadequate (per design, operation, maintenance, location, density) on-site disposal systems	Municipality, MUA, RSA	CWA 405(b) for confirmation of inadequate conditions; Environmental Infrastructure Financing Program for construction of selected option
Inadequate or improperly maintained stormwater facilities, illicit connections	Measures required under Phase II Stormwater permitting program including any additional measures determined in the future to be needed through TMDL process	Municipality, State and County regulated facilities, stormwater utilities	CWA 319(b); Environmental Infrastructure Financing Program for construction of selected option
Malfunctioning sewage conveyance facilities	Identify through sewer trackdowns	Owner of malfunctioning facility—compliance time	User fees
Domestic/captive animal sources	Pet waste ordinances	Municipalities for ordinance adoption and compliance	State source and CWA 319(b) assistance to municipalities

17

STEP 3
INCORPORATION OF TMDL INFO INTO SPPP

Wall Township has reviewed the TMDL reports identified utilizing the NJDEP TMDL Lookup Tool. The following TMDLs have been identified for our municipality:

1) Applicable Stream TMDLs

a) Fecal Coliform: Hannabrand Brook, Jumping Brook, Metedeconk River N Br, Haystack Brook, Muddy Ford Brook, Titmouse Creek, Snipe Creek, Shark River, Wreck Pond Brook

b) Mercury: Shark River, Wreck Pond Brook

c) Total Phosphorous: Shark River

2) Applicable Shellfish TMDLs

a) Total Coliform: Barnegat Bay, Metedeconk, Manasquan, Point Pleasant, Shark River

18

STEP 3

INCORPORATION OF TMDL INFO INTO SPPP

Optional Measure

To address Fecal Coliform TMDL for the Hannabrand Brook:

■ Potential Source: Wildlife (Nuisance concentrations, e.g. resident Canada geese)

■ Implementation: Adopt and enforce wildlife feeding ordinances; Implement Goose Management BMPs

■ Example Goose Management BMPs:

■ Barriers, Overhead Wire Grids, Scare Decoys, Sound Deterrents, Repellants, Visual Deterrents, Hazing, Educating the Public, Hunting and Egg Addling, Oiling or Replacing.

19

STORMWATER FACILITIES:
INVENTORY, MAPPING &
MAINTENANCE
REQUIREMENTS

20

STORMWATER FACILITY MAINTENANCE
REQUIREMENTS

■ Maintenance Guidance available at:
www.njstormwater.org/maintenance_guidance.htm

■ Maintenance must be performed pursuant to maintenance plans, or as needed, to ensure proper function and operation of stormwater facility.

■ MAINTAIN COPIES OF ALL MAINTENANCE PLANS FOR STORMWATER FACILITIES APPROVED BY MUNICIPALITY

Maintenance Plan: prepared by design engineer for stormwater management measures incorporated into design of major development.

21

Description of Stormwater Management Measures

Name of the stormwater management measure (e.g., Infiltration Basin)

Design storm:

- **Design Purposes:**
 - o (Water quality, water quantity, and/or recharge)
 - o 2-year storm (____ inches);
 - o 10-year storm (____ inches);
 - o 100-year storm (____ inches)
- **Dimensions:** _____ (Length) x _____ (Width) x _____ (Depth)

Name of the stormwater management measure (e.g., Grass Swale #1)

Design storm:

- **Design Purposes:**
 - o (Water quality)
 - o 1.25 inches in 2 hours
- **Dimensions:** _____ (Length) x _____ (Width) x _____ (Depth);
- **Slope:** _____

Name of the stormwater management measure (e.g., Drywell #1)

Design storm:

- **Design Purposes:**
 - o (Water quantity and/or recharge)
 - o 1.25 inches in 2 hours
- **Dimensions:** _____ (Length) x _____ (Width) x _____ (Depth)

Continue adding sections for additional storm water management measures as necessary

More detailed information regarding each specific measure should be listed in the attached Field Manual.

MAINTENANCE PLANS

NJDEP template available to assist design engineers with the preparation of maintenance plans.

22

Attachment of Field Manuals for Stormwater Management Measures on this Site

As per N.J.A.C. 7:8-5.8(b)(6), preventative and corrective maintenance shall be performed to maintain the function of stormwater management measures, including repair or replacement of the structure, removal of sediment, debris or trash; restoration of eroded areas; snow and ice removal; fence repair or replacement; restoration of vegetation; repair or replacement of non-vegetated linings; and removal of rock/stable and repair/restoration to damaged affected areas caused by them.

Each Field Manual attached to this Maintenance Plan is a separate document pertaining to one specific stormwater management measure, and should be used by inspections and maintenance crews in order to carry out the maintenance work required by N.J.A.C. 7:8-5.8(a). Design engineers should prepare the field manuals in accordance with the design of each measure and the specific requirements of the site. See the sample field manuals for further guidance.

Field Manual for (BMP name and No.)
Field Manual for (BMP name and No.)
Field Manual for (BMP name and No.)
Field Manual for (BMP name and No.)
Field Manual for (BMP name and No.)
Field Manual for (BMP name and No.)

MAINTENANCE PLANS

NJDEP template available to assist design engineers with the preparation of maintenance plans.

23

Surface Infiltration – Extended Detention Basin # ____ on the Location Map


Development Name: _____

Township, County: _____

Location of Basin: X: _____ Y: _____ (or N: _____ E: _____)

Location Description: e.g., Northwest corner of the development, near County RT 531

Location Map



Example Map: Line aerial photo, site plan, or other sketch showing the locations of BMPs.

FIELD MANUAL

NJDEP templates for basic design information, checklists, and maintenance records.

Include essential maintenance requirements.

24

Visual Aid for Dry Type Stormwater Basin Inspection

Issue: The inlet is not properly drained, assuming it has not rained within 72 hours.

Corrective Action: Clear and remove sediment. Check whether the water table is at or above the bottom of the forebay. Also check the permeability of the underlying soil, if necessary.

Preventative Action: Routine inspections and removal of sediment from the forebay.

Issue: The inflow pipe is clogged by sediment and vegetation.

Corrective Action: Clear and remove sediment and unwanted vegetation.

Preventative Action: Routine inspection and removal of sediment and unwanted vegetation.

FIELD MANUAL

NJDEP templates for basic design information, checklists, and maintenance records.

Include essential maintenance requirements.

25

Inspection Checklist / Maintenance Actions
Surface Infiltration - Extended Detention Basin

Checklist (circle one): Quarterly / Annual / Monthly / Special Event Inspection

Checklist No. _____ Inspection Date: _____

Date of most recent rain event: _____

Rain Condition (circle one):
Drizzle / Shower / Downpour / Other _____

Ground Condition (circle one):
Dry / Moist / Flooding / Submerged / Snow accumulation

Component No. / Component Name	For Inspector	For Maintenance Crew
1. Infiltration Bed	Standing water is present after the design drain time is approximately _____ hours	Y_ N_
	Excessive sediment, silt, or trash accumulation in basin bed	Y_ N_
	Erosion or channelization is present	Y_ N_
	Animal burrows/voids are present	Y_ N_
	Unseen bed	Y_ N_
2. End of outfall pipe	Y_ N_	Y_ N_

FIELD MANUAL

NJDEP templates for basic design information, checklists, and maintenance records.

Include essential maintenance requirements.

26

OUTFALL PIPE MAPPING

Outfall Pipe Mapping is required to be submitted to NJDEP

- Due: January 1, 2019
- NJDEP created a free stormwater facility mapping "app". Use of the app will upload location information directly to NJDEP.

WILL REQUIRE ARCGIS ONLINE LICENSE FOR USE

- Alternative: Submission of coordinates on spreadsheet format

Federal Rule requires electronic submission by December 21, 2020.

Use of NJDEP Mobile App will satisfy this requirement.

27

www.nj.gov/dep/dwq/msrp_map_aid.html

Bureau of Nonpoint Pollution Control

Municipal Stormwater Mapping and Inventory Assistance

As part of the Department's continued effort to assist municipalities in meeting stormwater management and inventory requirements, the Department has developed and made available a number of mapping and inventory tools. These tools are meant to help municipalities develop an inventory, and subsequently a map, of their stormwater management facilities. The mapping tools provide a template for collecting information on the following:

- Location
- Owner/Structure
- Stormwater Management Features (SWMF)
- Stormwater Management System
- Stormwater Management System
- Stormwater Management System

The mapping, measurement, and geospatial data of stormwater management features is required under the NJPDES for all regulated municipalities. The Department's mapping and inventory tools provide a number of support to help municipalities develop an inventory, and subsequently a map, of their stormwater management facilities. The mapping tools provide a template for collecting information on the following:

Acquired Online Mapping Tool

This tool is a web-based application that allows users to map stormwater management features. The tool is available to all municipalities and is accessible via a web browser. The tool is designed to be used by a single user at a time. The tool is designed to be used by a single user at a time. The tool is designed to be used by a single user at a time.

Template Stormwater Mapping and Inventory Assistance

This tool is a template for collecting information on stormwater management features. The tool is available to all municipalities and is accessible via a web browser. The tool is designed to be used by a single user at a time. The tool is designed to be used by a single user at a time. The tool is designed to be used by a single user at a time.

Stormwater Mapping and Inventory Assistance

This tool is a template for collecting information on stormwater management features. The tool is available to all municipalities and is accessible via a web browser. The tool is designed to be used by a single user at a time. The tool is designed to be used by a single user at a time. The tool is designed to be used by a single user at a time.

OUTFALL MAPPING

Mapping and Inventory Assistance

28

REQUIRED INFORMATION

- **Local ID**
- **Owner Type**
 - (County, Federal Government, Municipality, Private, School District, State, Other)
- **Outfall Type**
 - (Open Channel Outfall, Outfall Pipe, Other)
- **Pipe Material**
 - (Brick, Clay, Concrete, Metal, Plastic, PVC, Other, Not Applicable)
- **Pipe Shape**
 - (Arch, Circular, Elliptical, Rectangular, Square, Other, Not Applicable)
- **Pipe Height inches**
- **Pipe Width inches**
- **Headwall Structure**
 - (Abutment Wall, Brick Culvert Wall, Bridge Abutment, Cinder Block, Steel Bulkhead, Stone, Wood Bulkhead, Other, Not Applicable)
- **BMP Structure**
 - (Concrete, Gabion Basket, Rip Rap, Other, None)
- **Contributing Drainage Area**
 - (Commercial, Industrial, park or Open Space, Residential)
- **Type Area Receiving**
 - (Bay/Estuary, Canal, Ditch, Field, Lake/Pond, Ocean, Stormwater Basin, Stream/River, Swale, Wetland, Woodland, Other, Unknown)
- **Data Collection Method**
 - (Desktop Collection, Mapping Grade GPS, Mobile Device, Mobile Device GPS Paired, Recreation Grade GPS, Survey Grade GPS)
- **Comments**
- **Coordinates (X,Y, Longitude, Latitude)**

OUTFALL MAPPING

Microsoft Excel Database Option

Template includes dropdown menus

29

LOCAL PUBLIC EDUCATION PROGRAM

30

LOCAL PUBLIC EDUCATION AND OUTREACH

■ **Implement education program**

- One activity must involve educating businesses and the general public of hazards associated with illicit connections and improper disposal of waste
- Keep records to demonstrate compliance

■ **Label storm drain inlets**

- All inlets along sidewalks on municipal streets
- All inlets within plazas, parking areas or maintenance yards operated by the municipality

■ **Advertise public involvement programs pertaining to education and outreach on town website, through a mailing, in a local paper, or other similar means**

31



LOCAL PUBLIC EDUCATION AND OUTREACH

■ **Annual education points system revised (12 points minimum) and activities expanded (choose 3 out of 5 categories).**

- Category 1: General Public Outreach
- Category 2: Targeted Audiences Outreach
- Category 3: School / Youth Education Activities
- Category 4: Watershed / Regional Collaboration
- Category 5: Community Involvement Activities

- Opportunities to participate must be advertised on website, through a mailing, through newspaper or other similar means.

32



GET 3 POINTS

EJIF has provided a templated brochure that you can customize with your town's information.

Distribute this information to every resident and business to satisfy this requirement.

33

UNDERGROUND
STORAGE TANKS

Big
updates to
an old rule

History Your Future or Revenue and Compliance Assistance Opportunities

Compliance & Enforcement

Issued: February 21, 2018

#2018-02

New Rules and Amended Requirements for
Underground Storage Tank Facilities

Who is affected by this initiative?

Owners and operators of regulated underground storage tanks (USTs) and the individuals and business firms that provide UST services should be aware of the newly amended rule. Regulated UST systems include one or more tanks, with underground piping and related equipment, containing motor fuel, liquid petroleum products, waste oil or other hazardous substances for commercial use. The state also regulates heating oil tanks larger than 2,000 gallons used at non-residential buildings.

Why is NJDEP issuing this advisory?

New rules and amendments to the UST Rule, N.J.A.C. 7:14B, were adopted in the New Jersey Register (50 N.J.R. 409), effective January 10, 2018. The new rule provisions, adopted pursuant to Federal requirements, establish standards for secondary containment and interstitial release detection monitoring of UST systems. The provisions expand the maintenance and testing requirements for UST systems, require training and designation of a Class A, Class B, and Class C UST operator for each facility, and include rules for partially regulated UST systems, field constructed tanks, and airport hydrant systems. A number of additional amendments were made specific to the NJDEP UST Rules in an effort to update and improve oversight of the regulated community. These amendments establish base penalties for violations and reduce the UST registration period from three years to one year. They require a 14-day notification to the NJDEP prior to performing installation, closure or modifications to an UST system, and improve aspects of the certifications for individuals and business firms providing UST services (contractors), consistent with the new rules and program procedures.

The NJDEP is providing this advisory as a brief, general introduction to advise the regulated community and stakeholders of recent changes impacting owners and operators of UST facilities. Failure to comply with the rules may result in a facility receiving a Notice of Violation and a potential penalty assessment or, for certain requirements, a delivery ban prohibiting additional fuel deliveries until compliance is achieved. It is strongly recommended that individuals affected by this rule try to fully understand all the details of the regulations applicable to them. A courtesy copy of the official rule is available on the NJDEP website at: www.nj.gov/dep/ust/rules/rulec7_14b.pdf.

What compliance assistance is available?

IMPORTANT DATES:
April 11, 2018

Federally regulated UST systems require secondary containment and interstitial release detection monitoring for tanks and associated piping and equipment.

NJDEP
ENFORCEMENT
ALERTS

www.nj.gov/dep/enforcement/

NEW UST RULES

EPA

Published new rule in July 2015

Approximately 553,000 active USTs in US

Since 1984, 1.4 million tanks have been closed

NJDEP

Adopted EPA and published new rule on January 16, 2018

10/1/2018

36

PARTS OF A UST

10/1/2018

37

VEEDER-ROD

11-2016 414H45
REFUEL DLE 2

UST COMPONENTS

- 1 - Piping Sump
- 2 - Bushing/Collar
- 3 - Piping Boot
- 4 - ATG Probe
- 5 - Sump Sensor
- 6 - ATG
- 7 - Strapping
- 8 - Tank Anchors
- 9 - Dispenser
- 10 - Dispenser Sump
- 11 - Product Piping
- 12 - STP Head
- 13 - Drop Tube
- 14 - Ball Float Valve (old)
- 15 - Spill Bucket/Fill Pipe
- 16 - Vent Pipe

Accessing the underground tank

Remove the STP sump cover and spill bucket cover for access to the tank

Tank access port


Sensor port

Spill Bucket

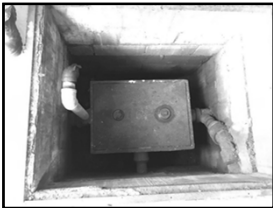
Tank access

WHAT IS A SUMP?

Below the surface?



A potential to store a petroleum or hazardous substance?
A flow through setup?



40


EXISTING REQUIREMENTS

10/1/2018

41

REGULATED USTS

- Insurance
- Registration with NJDEP
- Release Response Plan
- Corrosion Protection
- Overfill Protection
- Spill Protection (all sumps)
- Release Detection (RDM)
- Proper Fill Port markings
- SUMPS may be USTs



1. Pre-Delivery

- Spill bucket inspection log

2. Monthly

- Sump, fill port, and dispenser inspection logs
- **Keep evidence of leak detection tests**
- If your system does not have a print option, document tests in a log book.

3. Annually

- Recertification of the Release Detection Monitoring (RDM) systems

4. Ongoing

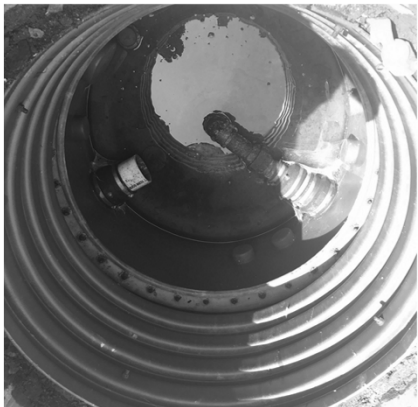
- Release Response Plan Posted
- **UST Registration Posted**

5. Additional Recordkeeping

- Cathodic protection records

USTs,
Staying in
Compliance

Compliance
Checklist
For Existing
Rules



UST
Checking
piping sump
monthly for
water/debris

44

**RELEASE
RESPONSE
PLAN**

- Contingency plan in case of a release
- Must be posted/accessible
- Required for ALL regulated USTs
- A Licensed Site Remediation Professional (LSRP) or licensed firm must be "identified" on the Plan but need not be "Retained"

Underground Storage Tank Release Response Plan
(per N.J.A.C. 7:14-5.5)

STOP THE RELEASE:
Take immediate action to prevent the release of product.
Turn off the power to the tank pump.
Make sure you know where your Emergency Shut off switch is located.
Empty Tank, if necessary, to prevent further contaminating the site.

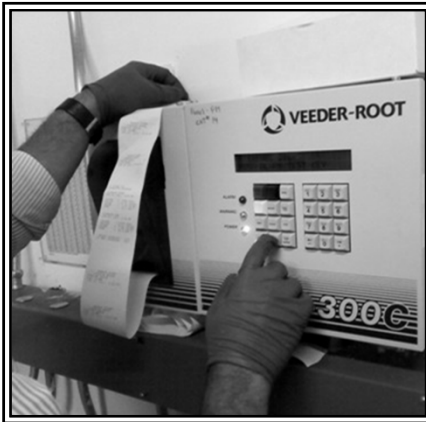
CONTAIN THE SPILL OR OVERFILL:
Contain, absorb, and clean up any surface releases. Identify any fire, explosion, or vapor hazards and take action to neutralize these hazards.

CALL FOR HELP AND TO REPORT SUSPECTED OR CONFIRMED RELEASE:
Contact NJDEP immediately.
Contact your local fire or emergency response authority.

Important Contact Information

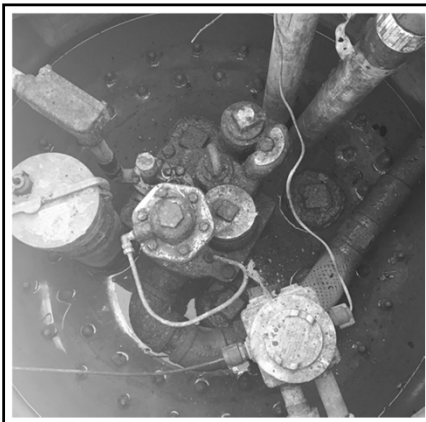
NJDEP/UST: 609-496-5555 TANK CAPACITY: 2,500 Gallons
Facility Name: Secaucus Municipal Utility Authority
Address: 1100 Koelle Boulevard Secaucus, New Jersey 07094
State UST Agency: New Jersey Department of Environmental Protection Phone #: 609-627-6227
Local and County Health Department: Secaucus Health Department Phone #: 201-330-2037
Secaucus Fire Department: Secaucus Fire Department Dispatch Phone #: 201-330-1100
Secaucus Police Department: Secaucus Police Department Dispatch Phone #: 9-1-1
UST Coordinator: KJ Environmental Services 1-800-955-5353
Owner: Secaucus Municipal Utility Authority Phone #: 201-330-2039
Operator: Joe Taha 201-330-5353
A/E Operator: KJ Environmental Services 1-800-955-5353
LSRP:

15



**ANNUAL
CERTIFICATION
REQUIRED!**

Certified Testing
Company must
perform annual
inspection &
certification of
your RDM system



**USTS:
PRESSURIZED
PIPING**

Ensure you are
testing your
Line Leak
Detectors
ANNUALLY

47

New Requirements

**operator training
testing
upgrades
inspections**

48

OPERATOR TRAINING CLASS A, CLASS B, CLASS C

Class A Operator

- The individual designated by the owner or operator to have primary responsibility to operate and maintain the UST system
- The Class A operator typically manages resources and personnel, such as establishing work assignments, to achieve and maintain compliance with regulatory requirements.

Class B Operator

- The individual designated by the owner or operator to have day-to-day responsibility
- The Class B operator typically implements in-field aspects of operation, maintenance, and associated recordkeeping for the UST system.

Class C Operator

Can be trained by A/B Operator. Is an on-site employee, responsible for dispensing fuel, typically first to respond to an issue.

49

OPERATOR TRAINING

Un-manned Sites

- Although each facility must designate and train a Class C operator, some unmanned facilities **may not have a Class C operator on site.**
- Examples of these types of facilities are emergency generators and card lock/card access facilities, such as at a gas pump for **municipal** or corporate vehicles.

Retraining

Retraining required within 30 days for Class A and B operators for USTs determined to be out of compliance.

- Unless, Class A and B Operators take annual refresher training
- Or, Implementing agency waives training

50

OPERATOR TRAINING

Training Records

- Trainee name
- Date trained
- Operator training class completed
- Name of training company or examiner
- Training company's name, address, phone #

Identify all designated operators at the facility

- Operator name
- Operator class
- Date assumed duties
- Training/Retraining dates

51



October 2018

A leak test is required for ALL spill buckets and sumps

OR

An upgrade to doublewall buckets and sumps is required

SPILL BUCKET TESTING

- No later than October 13, 2018, you must conduct the first 3 year test of your spill bucket.
- The 2015 federal UST regulation requires operability testing of spill buckets and inspections of overfill prevention equipment once every three (3) years.
 - The test must be conducted according to a code of practice (aka PEI-RP 1200).
 - **If you use a double-walled spill bucket** and check the interstitial space of your spill bucket for leaks during the walkthrough inspection, **then this testing is not required.**
 - Pass or fail criteria are based on the method used for testing.
 - For example, EPA allows the **Petroleum Equipment Institute's Recommended Practice 1200** to be used for this testing. This code of practice contains information about the pass or fail criteria.
 - If you repair your spill or overfill prevention equipment, you must test or inspect, as appropriate, the equipment within 30 days after the repair.
 - Failing equipment should be repaired and retested or replaced if repair is not possible.



New Requirement - Installation of **under-dispenser containment (UDC)** for all new or replaced dispenser systems

SUMP INSPECTIONS

UDC must be liquid-tight and allow for visual inspections to be periodically monitored for leaks from the dispenser

UST OPERATION AND MAINTENANCE WALKTHROUGH INSPECTIONS

- Every 30 days: Check spill prevention equipment and release detection equipment
- Annually: check containment sumps and any hand held release detection equipment
- Fuel Delivery records





MONTHLY WALKTHROUGH INSPECTIONS	
RDM & Sumps	Spill Prevention Equipment
Monthly Check.... <ul style="list-style-type: none">■ Release Detection Equipment■ Containment Sumps■ Handheld Equipment (tank gauge)	<ul style="list-style-type: none">■ Check for damage■ Remove liquid/debris■ Remove any obstructions in fill pipe■ Check fill cap is secured■ Check for leaks in all interstitial areas

<ul style="list-style-type: none">■ Monthly Visual Inspections<ul style="list-style-type: none">■ Walkthrough inspections that look at spill equipment at least every 30 days.■ Records of walkthrough inspections must be kept and must include a list of each area checked.■ If owners and operators receive deliveries less frequently than every 30 days, spill prevention equipment may be checked prior to each delivery.■ Delivery records must be maintained if spill prevention equipment is checked less frequently than every 30 days.■ Resources<ul style="list-style-type: none">■ PA-DEP Bulletin – Containment Testing for USTs■ US-EPA – Operating and Maintaining Your USTs – Details on Inspections and Testing■ US-EPA – Check out Chapter 4 for Spill Bucket Testing & Spill Equipment Inspections – Operating and Maintaining your UST System	MONTHLY INSPECTIONS
--	----------------------------

<p>REMINDER: EJIF BURIED PIPING POLICY</p> <p>10/1/2018</p>	<p>60</p>
--	-----------

**WE HAVE AN ABOVEGROUND TANK WITH BURIED PIPING.
IS THIS A REGULATED UST SYSTEM?**






REMINDER:

BURIED PIPING

EJIF is still reimbursing aboveground storage tanks equipped with buried piping.

62



**EXAMPLE
OF BURIED
PIPING**

63

UST OPERATION AND MAINTENANCE
WALKTHROUGH INSPECTIONS

RDM & Sumps

Monthly Check....

- Release Detection Equipment
- Containment Sumps
- Handheld Equipment (tank gauge)

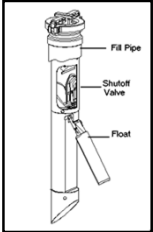

Spill Prevention Equipment

- Check for damage
- Remove liquid/debris
- Remove any obstructions in fill pipe
- Check fill cap is secured
- Check for leaks in all interstitial areas

64

OVERFILL PREVENTION EQUIPMENT
INSPECTIONS



Overfill prevention equipment must be inspected
once every three years



65

SPILL PREVENTION EQUIPMENT
SUMP TESTING

Spill prevention equipment and containment sumps
tested a minimum of **once every 3 years**.



66

22

EMERGENCY GENERATOR USTS

Installed on or before October 13, 2015	Installed after October 13, 2015
▪ must meet release detection requirements by October 13, 2018	▪ must meet release detection requirements at installation.

67

EJIF TRIVIA

68

Easy

**What does AST
stand for?**

Easy

What does UST
stand for?

Medium

How do you properly
store tires?

Medium

Where should roadway
de-icing material be
stored?



Hard

Name one change in the
updated 2018
Stormwater Rules

Hard

How many gallons of oil
requires a SPCC Plan?



<p>Matt Mee Senior Scientist - Regulatory Compliance mmee@psands.com 201-341-6285</p> <p>Marissa Magura Project Scientist - Regulatory Compliance mmagura@psands.com 862-432-8140</p> <p>http://www.njejif.org</p>	<p>Contact</p> <p>77</p>
---	---------------------------------
